

Uniden[®]

GUARDIAN 

55 GXVR SERIES

4MP 2K THERMAL-SENSING AI SECURITY SYSTEM


4MP | 2K RESOLUTION


UP TO 8 | CAMERAS

 **Ai INTELLIGENCE**
FACE, TRIP WIRE & INTRUSION DETECTION




 2TB STORAGE CAPACITY


 SMART IR NIGHT VISION:
UP TO 30 METRES


 XVR TECHNOLOGY – WIRED
CAMERAS + IP CAMERAS
COMPATIBLE

 H.265 VIDEO COMPRESSION
TECHNOLOGY

 SMART PUSH NOTIFICATIONS
& EMAIL ALERTS

 RECORD & WATCH FOOTAGE
VIA TABLET OR SMARTPHONE

 ULTRA WIDE PIR DETECTION
ANGLE 110°

 SURVEILLANCE GRADE
HARD DRIVE

ADDITIONAL FEATURES

- 8 CHANNELS
- 24/7 SUPPORT
- REMOTE VIEWING
- USB BACKUP



CLOUD BACKUP

REMOTE BACK-UP
PEACE OF MIND[^]



THERMO SENSE

HEAT & MOVEMENT SENSOR DETECTION

RANGE OVERVIEW

50+ YEARS

GLOBAL EXCELLENCE
SINCE 1966



SIMPLE INSTALLATION



CLOUD BACKUP

Ai INTELLIGENCE



NIGHT VISION



SUN



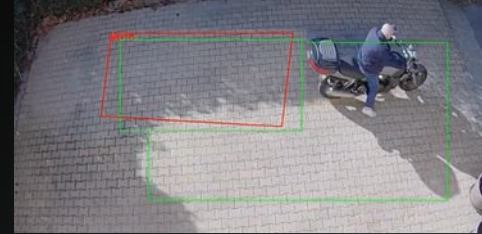
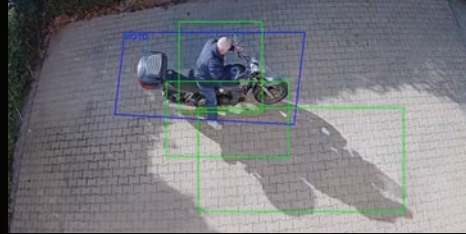
RAIN



SNOW



DUST

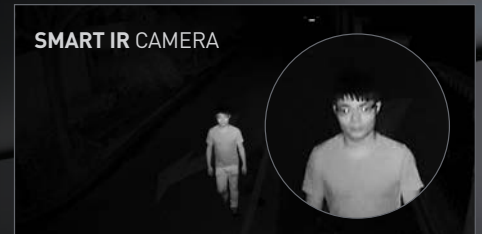


INTRUSION DETECTION FEATURE

Intrusion Detection Technology monitors a predefined virtual delegated area, automatically detecting entry or departure. The security system analyses the subjects dimension ratio to reduce false alarms. A push notification will be then sent to your smartphone or tablet.



STANDARD CAMERA



SMART IR CAMERA

SMART IR NIGHT VISION FEATURE

Smart IR adjusts the light for a better close up look at the object. Normal security cameras use a static IR, which can lead to overexposure and blurring of critical details. Once the object has passed, the security cameras revert to normal view mode.

GXVR 55XXX SPECIFICATIONS

SYSTEM

Main Processor Embedded processor
Operating System Embedded LINUX

VIDEO

Camera Input 8 Channel BNC +
4 IP Channels
Camera Type Supported HDCVI, AHD, TVI, CVBS,
IP Camera

AUDIO

Input 1 Channel RCA Port
Output 1 Channel RCA Port
Two-way Talk Yes

DISPLAY

Interface 1 HDMI, 1 VGA
Resolution HDMI: 3840x2160,
2560x1440, 1920x1080,
1280x1024, 1280x720
VGA: 1920x1080,
1280x1024, 1280x720
Display Split 1/4/8/9/16

RECORDING

Video/Audio Compression H.265+/H.265/H.264+/
H.264
Supported Resolution HDCVI: 4K, 4MP, 1080P,
720P
AHD: 4MP, 1080P, 720P
TVI: 4MP, 1080P, 720P
CVBS: 960H, D1
IP Camera: 4K, 4MP,
1080P, 720P

Resolution

Main Stream:
4K(1~7fps);
6MP(1~10fps); 4MP
(1~15fps); 1080P/720P/
960H/D1/CIF(1~25fps)
Extra Stream: 960H(
1~15fps); D1/CIF(1~25fps)

Video Bit Rate Record Mode

32Kbps ~ 6144kbps
Manual, Schedule,
Motion Detection, Ai
AAC (audio input port)
/G.711A/G.711U/PCM
64Kbps Per Channel

Audio Compression

Audio Bitrate

VIDEO DETECTION

Video Detection PIR, Motion Detection, Ai

PLAYBACK & BACKUP

Sync Playback 1/4/9
Search Mode Time, Date, Event
& Channel search
USB Device

Backup Mode

USB Device

NETWORK

Ethernet 1 RJ-45 port (1 Gigabit
Ethernet Port)
10 users

Max. User Access

Supported App

Guardian 365 PRO
for iOS & Android
IP Camera
Interoperability
ONVIF 16.12

STORAGE

Internal HDD 2TB (supported
up to 10TB)

AUXILIARY INTERFACE

USB Interface 1 USB2.0 port,
1 USB3.0 port
1 RS485 port
for PTZ Control

RS485

GENERAL

Power Supply DC12V/2A
Working Environment -10°C ~+55°C /
0%~90%RH



FREE APP GUARDIAN365PRO
FOR APPLE & ANDROID / SMARTPHONES & TABLETS





THERMO SENSE

HEAT & MOVEMENT SENSOR DETECTION

Thermo Sense technology is a smart heat sensor that detects motion from people as opposed to movement from trees and false alarms. The Thermo Sense feature on Uniden security PIR cameras allows you to receive notifications from actual events giving you the ability to act quickly and call the police when needed.



FACE DETECTION FEATURE

Face Detection technology accurately detects human faces, captures facial images and triggers recording and sends a notification to your smartphone or tablet.



TRIP WIRE FEATURE

Trip Wire Feature allows you to line mark a door, window or any other important area. When it detects movement, a snapshot is taken and notification sent to your smartphone or tablet.



IN THE BOX

QUANTITIES VARY DEPENDING ON PRODUCT PURCHASED

CAMERAS

Image Sensor 1/3" CMOS
Effective Pixels 2688 X 1520 (4MP)
Video Output 1 Channel BNC

CAMERA FEATURES

Night Vision 30m
IR Cut filter Yes
Smart IR Auto
White Balance Auto
WDR Yes

LENS

Focal Length 2.8mm fixed lens
Angle of View 107.2°
Max Aperture F1.8

PIR

Detection Type Passive infrared
Detection Range 2-10m
Detection Range 110°

GENERAL

Power Supply DC 12V
Power Consumption Max 4.4W
Working Environment -10°C~+50°C /
Less than 95%RH
IP66
Material Aluminium (Front cover)
+ Plastic (Rear Barrel)



GDVR 55840

1 x GXVR 55800 DVR Unit
4 x Weatherproof* Outdoor
Cameras (GDC5510)



GDVR 55880

1 x GXVR 55800 DVR Unit
8 x Weatherproof* Outdoor
Cameras (GDC5510)



BNC Power Cables (18 Metres)



Power Supplies



Power Splitter Power Adaptor



Ethernet Cable



Security Stickers



Mounting Screw Kits



Mouse

55 GXVR SERIES

Uniden®

GUARDIAN 

XTEND YOUR SYSTEM WITH OPTIONAL IP CAMERAS USE AS STANDALONE CAMERAS OR EXTEND YOUR 55 SERIES SECURITY SYSTEM.

APP CAM XLIGHT

WIFI CAMERA^A & LIGHT IN ONE

The Uniden App Cam X Light delivers 2MP, FULL HD 1080P live monitoring. It supports the latest H.265 video compression technology, which can save up to 50% on bandwidth and storage. Being IP65+ certified, the camera can be used outdoors under typical Australian weather conditions. With built in spotlight, 110db siren and 2-way talk the X Light can actively monitor and deter intruders while using the same app to control the camera and system.



App Cam X Light



XVR TECHNOLOGY

XVR technology is the ultimate in flexibility with the ability to connect **wired cameras + IP enabled cameras** to suit any set-up.



GDC5510



APP CAM X55

OUTDOOR - EXTENDED RANGE



APP CAM X56

INDOOR - PAN, TILT & ZOOM

FOLLOW US ON



facebook.com/Uniden



instagram.com/UnidenAustralia



twitter.com/UnidenAustralia

UNIDEN.COM.AU

Some jurisdictions and authorities may regulate the use of surveillance products. It is the buyers responsibility to ensure they comply with the appropriate regulations when using this product. Specifications Subject to Change Without Notice. See Uniden Website for any changes: uniden.com.au * IP66 Weatherproof is defined as no ingress of dust; complete protection against contact [dust tight] and strong water jets or waves projected against the enclosure of the camera from any direction shall have no harmful effects. † IP65 Weatherproof is defined as no ingress of dust; complete protection against contact [dust tight] and low pressure water jets projected against the enclosure of the camera from any direction shall have no harmful effects. ^ Cloud Backup works with up to 2 Channels only, recording up to 960H resolution. Δ Requires WiFi router and internet connection and under same network domain. **Minimum Network Bandwidth Requirements:** For optimal performance of the smartphone app we advise a minimum network bandwidth of 4Mbps for Full HD (1080P) live stream, 2Mbps for HD (720P) live stream and 0.8Mbps for 352P live stream. If these bandwidth requirements are not met the live stream may not connect and will not be viewable on your smartphone. **Motion Detection:** Motion detection can be triggered by the PIR sensor in the camera. The PIR sensor only detects objects with heat up to 10 metres away and in the line of sight. At night, or in darkness, monitor motion detection sensitivity is not as effective as in daylight hours, as it relies on night vision capabilities. All brand names are registered trademarks of their respective owners. Uniden Guardian® is a trademark of Uniden Australia Pty Ltd. Apple and the Apple logo are trademarks of Apple Inc., registered in the U.S. and other countries. App Store is a service mark of Apple Inc. Android, Google Play, and the Google Play logo are trademarks of Google Inc. All diagrams, product photography and front cover photograph of hand and smartphone are for illustration purposes only. Some products may vary at the time of production. Smartphone not included. PLEASE NOTE: Included accessories colour and/or style & design may vary at time of packing.