

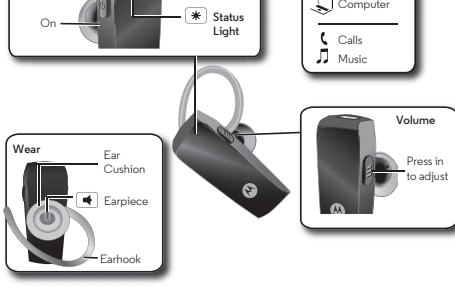


motorola

HK255 User Guide

At a glance

the important bits, quick and easy

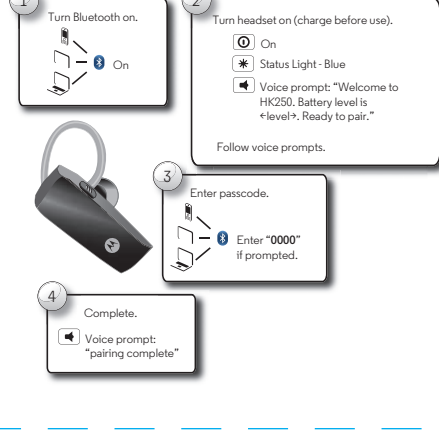


Note: Your battery is designed to last the life of your product. It should only be removed by a recycling facility. Any attempt to remove or replace your battery will damage your headset.

Note: Fully charge before use.

Connect & go

let's get you connected






Tip: For daily use, just make sure your headset is on, and your phone's Bluetooth feature is on. Your headset and phone connect automatically.

Basics

standard features, advanced quality

Calls

To...	
make a voice dial call	Press the Call button  and you hear a tone.
redial last call	Press and hold the Call button  until you hear a tone.
mute or unmute	Press and hold the Volume button .
end a call	Press the Call button  .

Note: Some features are phone/network dependent.

Note: Using a mobile device or accessory while driving may cause distraction and may be illegal. Always obey the laws and drive safely.

Note: may cause distraction and may be illegal. Always obey the laws and drive safely. Using a mobile device or accessory while driving.

Status light

An easy way to check your headset.

status light	headset
two blue flashes	turning on
rapid blue flashes	connecting to your device
slow blue flash	connected to your device
steady red	charging - low battery level
steady purple	charging - mid battery level
steady blue	charging - battery full

Help & more

• **Get help:** Visit www.motorolahome.com/support

• **Find accessories at:** www.motorolahome.com

Manufactured, distributed, or sold by Binatone Electronics International LTD., official licensee for this product. MOTOROLA and the Stylized M Logo are trademarks or registered trademarks of Motorola Trademark Holdings, LLC. and are used under license. Apple logo is a trademark of Apple Inc., registered in the U.S. and other countries. App Store is a service mark of Apple Inc. Google Play and Android are trademarks of Google Inc. All other trademarks are the property of their respective owners. © 2016 Motorola Mobility LLC. All rights reserved.

Product ID: MH002
Bluetooth ID: MH002
FCC ID: VLJ-MH002
IC ID: 4522A-MH002